

## We are seeking R&D collaborations and partnerships to fight against Neglected Tropical Diseases (NTDs), Malaria and Tuberculosis

September 13, 2018  
World Intellectual Property  
Organization Japan Office



World Intellectual Property Organization (WIPO) is a United Nations agency specializing in intellectual property (IP).

WIPO Japan Office, which was established in 2006, supports mainly Japanese users of the international IP application system and conducts IP capacity building projects for government officials and judges in developing countries.

On the occasion of BioJapan 2018, we will be participating in the event with a booth for the first time to promote our initiatives for better global health, “WIPO Re: Search” and expand our collaborative networks. We look forward to your participation in our R&D collaborations in the fight against NTDs, malaria and tuberculosis.

Let's contribute to global health together!

## 【What is WIPO?】

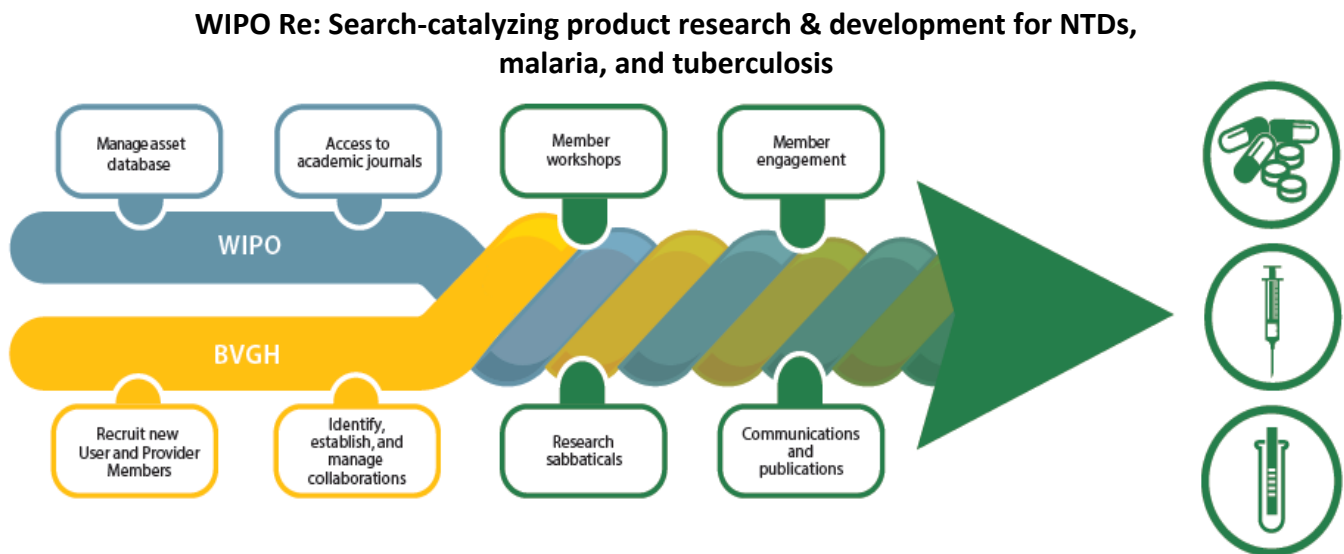
WIPO is the global forum for intellectual property policy, services, information and cooperation. WIPO is a self-funding specialized agency of the United Nations, dedicated to making IP work for innovation and creativity.

## 【WIPO and Global Health: Intellectual Property and Global Health】

We believe that intellectual property plays an important role in terms of technical resolution for global issues such as public health and food security. WIPO Re:Search was established in 2011 by WIPO in collaboration with BIO Ventures for Global Health (BVGH) and with the active participation of leading pharmaceutical companies and other private and public sector research organizations. WIPO Re:Search catalyzes the development of medical products for neglected tropical diseases (NTDs), malaria, and tuberculosis through innovative research partnerships and knowledge sharing.

## 【What is WIPO Re:Search?】

WIPO Re:Search recruits partners and realizes collaborations to combat global health issues, especially NTDs, malaria and tuberculosis.



# Main Activities

## ① Partnership Hub managed by BVGH

BVGH proactively connects potential users and licensees of WIPO Re:Search, creating research collaborations and ensuring WIPO Re:Search assets are being used productively.

## Members

### Universities



Institut Teknologi Bandung; George Washington University; Makerere University; Rio de Janeiro State University; University of Campinas; University of Dschang; Université Paris-Sud; University of Sao Paulo; University of South Carolina; University of Toronto; University of Zambia; Monash University; University of Melbourne; University of California, Berkley; etc.

### Research Institutes



Brazilian Biosciences National Laboratory; Eijkman Institute for Molecular Biology; International Centre for Diarrhoeal Disease Research, Bangladesh; Institute Pasteur de Madagascar; National Institute for Medical Research; Papua New Guinea Institute of Medical Research; University of Texas Southwestern Medical Center; etc.

### Businesses



Eisai Co. Ltd.; Takeda Pharmaceutical Co., Ltd.; GlaxoSmithKline; Johnson & Johnson; Merck KGaA; MSD; Novartis; Pfizer; etc.

## ② Online and freely accessible database of IP, technology and other knowledge assets

- a. Contains summary information of Members' technologies, IP and know-how
- b. Publicly accessible, hosted by WIPO

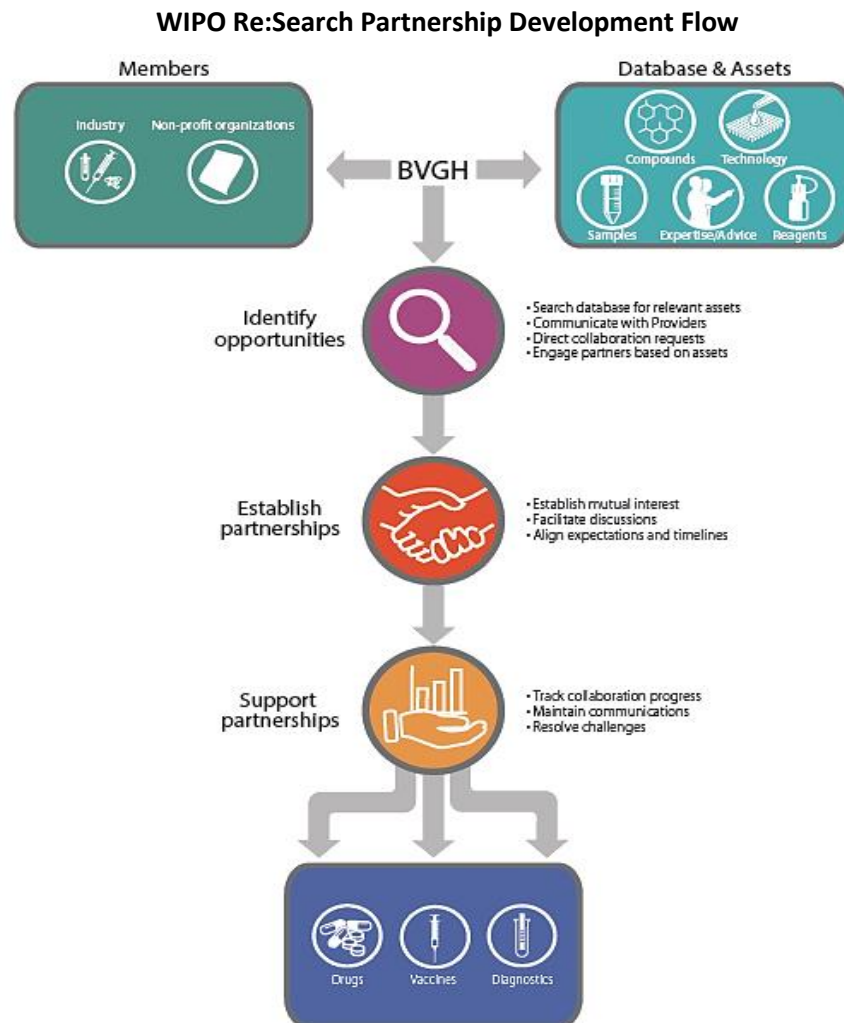
<WIPO Re:Search Database>

<http://www.wipo.int/research/en/search/>

## 【Collaboration examples】

- a. **Eisai Co., Ltd.** : Eisai has established partnerships and shared compounds with Northeastern University and University of California, San Diego for the screening of a drug for Chagas disease and leishmaniosis. Eisai also shares compounds with University of California, San Diego for the screening of a drug for Schistosomiasis.
- b. **Takeda Pharmaceutical Co., Ltd.** : Takeda and the National Institute of Allergy and Infectious Diseases (NAID) have entered into a joint venture to examine the feasibility of using Takeda's microneedle patch technology to administer a protein antigen-based, transmission-blocking malaria vaccine.
- c. **Supporting Services-Training in IP management for practitioners and research sabbaticals for scientists in developing countries**

In 2016 the Government of Australia contributed funding to WIPO to support the training of East African and Indo-Pacific researchers at Australian research institutes.



## 【WIPO Re:Search Membership benefits】

### Collaboration and Partnership development

Customized partnership development and alliance management services aligned with company priorities and interests

Relationship building with high-quality researchers including those at research institutions in low- and middle-income countries

Personalized introductions to WIPO Re:Search Members

Membership in a UN Agency program (World Intellectual Property Organization [WIPO])

Subscription to monthly BVGH Partnership Hub Snapshot newsletter

### Communications and Advertisement

Advocacy and recognition of company's commitment and contributions to global health<sup>1</sup>

Special mention on [BVGH website](#)

Special mention in BVGH Partnership Hub Snapshot newsletter

Global brand awareness<sup>2</sup>

Resources featured in Snapshot "Highlighted Contribution" section

Collaborations highlighted in [newsletters](#), [publications](#), [press releases](#), and [national and international presentations](#)

News of company's activities are advertised via BVGH's social media platforms (e.g., [Twitter](#) and [LinkedIn](#))

Opportunity to represent WIPO Re:Search and company at [high-profile global events](#)

Input in WIPO Re:Search Biennial Meeting agenda

### Advancing Business and Corporate Social Responsibility Objectives

Improving health worldwide by sharing assets (including those developed for non-communicable diseases) to catalyze high-quality neglected disease R&D

Strengthening of submissions to the [Access to Medicines Index](#) through [inclusion of WIPO Re:Search asset-sharing activities](#)

Opportunity to contribute to international dialogue and action on pressing issues on the global health agenda (e.g., UN Sustainable Development Goals, antimicrobial resistance, access to medicines, pandemic preparedness)

### Access to Information

Access to proprietary BVGH Reports

Complimentary access to BVGH workshops and symposia

<sup>1</sup> BVGH will use companies as examples during discussions with key stakeholders from different sectors.

<sup>2</sup> Organization and logo included in marketing materials, media coverage, publications, etc., which are distributed to the global WIPO Re:Search membership.

### 【Contact Us】

#### World Intellectual Property organization Japan Office

Address Daido Seimei Kasumigaseki Building 3F 1-4-2 Kasumigaseki

Chiyoda-ku, Tokyo 100-0013, Japan

Tel 03-5532-5030

Email [japan.office@wipo.int](mailto:japan.office@wipo.int)

URL <http://www.wipo.int/about-wipo/ja/offices/japan/index.html>

WIPO Re:Search Website <http://www.wipo.int/research/en/>

